

**RADIALL/LARSEN**  
antenna technologies

# Antenna Solutions for Wireless Data Networks



**Radiall/Larsen**  
**Antenna Product Platform**  
**2.4 GHz / 5.2 GHz / 5.8 GHz**

ISO 9001 Certified



*One Source: From the Antenna to the PCB*

# Notebook/Desktop/Handheld Device Antenna Solutions ( 2400-2500 MHz )



## Stealth Blade Antenna

Flexible dipole with a slim profile for mounting in constrained areas. Other connectors available.

P/N	Gain	Radiation	Size	Connector
SB2400	2 dBi	Omni (H360°)	2.8" L	3' or 6' of cable w/ no conn, SMA, SMB or MMCX



## Desk Top Dipole Antenna

Table top dipole antenna developed for use in WLAN terminal applications.

P/N	Gain	Radiation	Size	Connector
R380.500.104	2 dBi	Omni (H360°)	4" L	Pigtail SMB-R (5')



## Sleeve Dipole Antenna

Designed for access point or modem applications. Available with bulkhead feed-through and pigtail or with direct connector.

P/N	Gain	Radiation	Size	Connector
R380.500.100	2 dBi	Omni (H360°)	3.5" L	Pigtail MMS
R380.500.102	2 dBi	Omni (H360°)	3.5" L	MCX Male
R380.500.109	2 dBi	Omni (H360°)	3.5" L	SMA Male
R380.500.113	2 dBi	Omni (H360°)	3.5" L	Pigtail w/o connector
R380.500.122	2 dBi	Omni (H360°)	3.5" L	Pigtail UMP



## Molded Dipole Antenna

Robust design for portable applications. Resistant to drop, flex, torque and pull tests.

P/N	Gain	Radiation	Size	Connector
R380.500.121	2 dBi	Omni (H360°)	2.4" L	SMA Male
R350.500.125	2 dBi	Omni (H360°)	2.4" L	SMA-RP



## Miniature Dipole Antenna

Designed for modem applications.

P/N	Gain	Radiation	Size	Connector
SPDP242400	0 dBi	Omni (H360°)	3.5" L	SMA-RA Male



## Remote Miniature Dipole Antenna

Developed for use in WLAN terminal applications.

P/N	Gain	Radiation	Size	Connector
SPDP2400DF	2 dBi	Omni (H360°)	2.8" L	Pigtail MMCX-RA (4.5")

# Access Point/Subscriber Unit Antenna Solutions ( 2400-2500 MHz )



## Radome Collinear Omni Antenna

High gain, omni-directional antenna for subscriber unit applications.

P/N	Gain	Radiation	Size	Connector
R032400NM	5.5 dBi	Omni (H360°)	10" L	N Male



## Sectorial Wall Mount Antenna

Designed to improve indoor communications with poor reception. Articulating wall mount bracket for positioning horizontally to direct the pattern coverage in desired area.

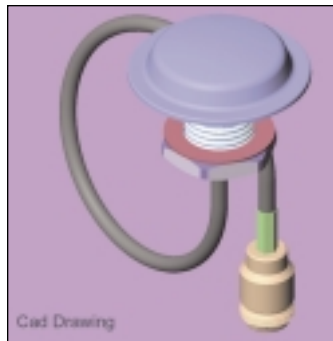
P/N	Gain	Radiation	Size	Connector
SW24008 (Vertical Polar.)	7.5 dBi	H Plane: 72° E Plane: 45°	4.7" Lx3.5" W	SMA-RA Female



## Articulated Sleeve Dipole Antenna

True sleeve dipole designs optimized for no ground-plane environments found in portable and terminal applications.

P/N	Gain	Radiation	Size	Connector
SPDA172400	2 dBi	Omni (H360°)	4.5" L	TNC
SPDA17RP2400	2 dBi	Omni (H360°)	4.5" L	TNC-R
SPDA242400	2 dBi	Omni (H360°)	4.5" L	SMA
SPDA24RP2400	2 dBi	Omni (H360°)	4.5" L	SMA-R

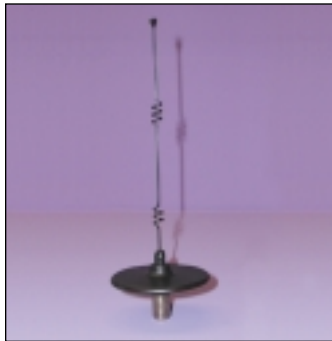


Cad Drawing

## Omni-Ceiling Mount Antenna

Designed for WLAN indoor coverage applications. The patented Rad-Slim™ design provides a very low profile. Other connectors available.

P/N	Gain	Radiation	Size	Connector
R380.500.501	2 dBi	Omni (H360°)	2" Dia. 0.4" Depth	Pigtail N (12")



## Collinear Array Whip Antenna

High gain, omni-directional base station antenna with an attached ground plane designed for optimum performance in extreme weather conditions.

P/N	Gain	Radiation	Size	Connector
FB45T2400	7 dBi	Omni (H360°)	8" L	N Female



## Planar Array Antenna

Lightweight design for indoor WLAN coverage.

P/N	Gain	Radiation	Size	Connector
PA4142400N	14.2 dBi	H Plane: 30° E Plane: 30°	9.4" Lx8.5" W	N Female



## Planar Array Antenna

Designed for Fixed Wireless Access applications and point-to-multipoint systems. A proprietary silk-screen, patented Rad-Lite™ technology process is used resulting in extremely accurate performance, long life and very low losses.

P/N	Gain	Radiation	Size	Connector
R380.500.207 (Vertical Polar.)	15 dBi	H Plane: 23° E Plane: 22°	12" Lx12" W	N Male
R380.500.208 (Horizontal Polar.)	15 dBi	H Plane: 23° E Plane: 22°	12" Lx12" W	N Male

# Point to Point/Bridge Outdoor/Base Station Antenna Solutions ( 2400-2500 MHz )



## Field Adjustable Sector Antenna

Designed with adjustable side panels for 60°-160° azimuth patterns.

P/N	Gain	Radiation	Size	Connector
R2304ISM (Vertical Polar.)	15 dBi @ 60° 13 dBi @ 90° 12 dBi @ 120° 10.5 dBi @ 160°	H Plane: 60°, 90°,120°,160° E Plane: 14.5°	20.5" L	N Female
R23042ISM (Vertical Polar.)	17.5 dBi @ 60° 15.5 dBi @ 90° 14.5 dBi @ 120° 13 dBi @ 160°	H Plane: 60°, 90°,120°,160° E Plane: 7.2°	40" L	N Female
R23044 (2300 MHz-2500 MHz) (Vertical Polar.)	20 dBi @ 60° 18.5 dBi @ 90° 17 dBi @ 120° 15.5 dBi @ 160°	H Plane: 60°, 90°,120°,160° E Plane: 3.7°	71" L	N Female



## Fixed Sector Antenna

Designed for wireless data and point-to-multipoint applications. Maximize tower space and obtain full coverage by alternating the horizontally polarized with the field adjustable vertically polarized sectors.

P/N	Gain	Radiation	Size	Connector
R2405H460 (Horizontal Polar.)	13.5 dBi	H Plane: 16° E Plane: 60°	20.5" L	N Female
R2405H490 (Horizontal Polar.)	12 dBi	H Plane: 16° E Plane: 90°	20.5" L	N Female
R23044180 (2300 MHz-2500MHz) (Vertical Polar.)	15 dBi	H Plane: 180° E Plane: 3.7°	71" L	N Female



## Grid Parabolic Antenna

Grid Parabolic with broadband dipole horn feed sealed for superior weatherization. Excellent choice when high gain is required in an environment of high wind loading.

P/N	Gain	Radiation	Size	Connector
R2448	27 dBi	H Plane: 8.6° E Plane: 7.5°	50.5" Dia.	N Female

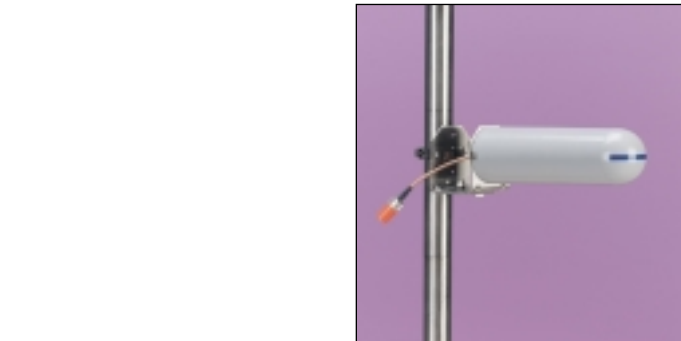


## Solid Parabolic Antenna

Available in 19" or 25" diameters and with full radomes for best performance in areas with extreme weather conditions.

P/N	Gain	Radiation	Size	Connector
R2418	19 dBi	H Plane: 18° E Plane: 20°	19" Dia.	N Female
R2424	21 dBi	H Plane: 13.5° E Plane: 15°	25" Dia.	N Female

R2418R/R2424R - Full Radome Option



## Shrouded Yagi Antenna

Completely weatherized for continuous operation in extreme weather conditions.

P/N	Gain	Radiation	Size	Connector
R2411	11.5 dBi	H Plane: 47° E Plane: 42°	10.5" L	N Female

## Introducing Radiall/Larsen High Performance 2.4 GHz, 5.2 GHz and 5.8 GHz Antenna Product Platform For Wireless Data Networks.



### Applications:

- WLAN 802.11b
- RFDC (Bar Code Scanner)
- RFID
- Wireless Internet

The networked world has gone wireless. Now it's easy to access the data information you need – when and where you want it.

Manufactured with technical excellence required to meet the demands of complex wireless networking needs, Radiall/Larsen 2.4 GHz, 5.2 GHz and 5.8 GHz antennas set the standard of innovation and performance. Easy to mount, our antennas are cost-effective and adaptable for a variety of hand-held, access point and bridge applications. Designed for long life and durability, our WLAN, RFDC, RFID and wireless internet antennas are light-weight and compact.

Radiall/Larsen has developed a number of well-mastered antenna technologies that can be utilized to solve your

particular needs and new antenna applications. In addition, Radiall is a global manufacturer of interconnect products and components including coaxial connectors, cable assemblies and lightning protectors.

At Radiall/Larsen, full custom design is a ready option when design parameters are very specific or have proprietary intent. Our focused, in-depth antenna expertise, full-service design and test facilities, ISO 9001 certified quality and broad manufacturing capabilities contribute to our product's technical excellence.

Whether it's a mono-band, dual-band, single or dual polarity, Radiall/Larsen's full line of 2.4 GHz, 5.2 GHz and 5.8 GHz antenna solutions will keep you connected.

# 5 GHz Products From Radiall/Larsen Antenna Technologies

## 5 GHz Antennas On The Leading Edge And Beyond



### Fixed Sector Antenna

Designed for wireless data and point-to-multipoint applications. Maximize tower space and obtain full coverage by alternating the horizontally polarized with the field adjustable vertically polarized sector.

P/N	Gain	Radiation	Size	Connector
R52041490	16 dBi	H Plane: 90° E Plane: 5°	26.5" Lx6.25" W	N Female
5.2/5.8 GHz (Vertical Polar.)				
R5205H1490	16 dBi	H Plane: 5° E Plane: 90°	24.5" Lx9" W	N Female
5.2/5.8 GHz (Horizontal Polar.)				



### Solid Parabolic Antenna

Best performance in areas with extreme weather conditions.

P/N	Gain	Radiation	Size	Connector
R5224M	28.5 dBi	H Plane: 6.1° E Plane: 6.1°	29" Dia.	N Female
5.2-5.8 GHz				



### Radome Collinear Omni Antenna

High gain, omni-directional antenna for subscriber unit applications.

P/N	Gain	Radiation	Size	Connector
R380.700.205	10 dBi	Omni (H360°)	14.1" Lx0.9" Dia.	N
5.8 GHz				



### Planar Array Antenna

Designed for Fixed Wireless Access applications and point-to-multipoint systems. A proprietary silk-screen, patented Rad-Lite™ technology process is used resulting in extremely accurate performance, long life and very low losses.

P/N	Gain	Radiation	Size	Connector
R380.700.203	20 dBi	H Plane: 12° E Plane: 14°	12" Lx12" W	N Male
5.8 GHz (Vertical Polar.)				
R380.700.204	20 dBi	H Plane: 12° E Plane: 14°	12" Lx12" W	N Male
5.8 GHz (Horizontal Polar.)				



### Sleeve Dipole Antenna

Designed for access point or modem applications. Available with bulkhead feed-through and pigtail or with direct connector.

P/N	Gain	Radiation	Size	Connector
R380.600.101	1 dBi	Omni (H360°)	2" Lx0.4" Dia.	UMP
5.2 GHz				